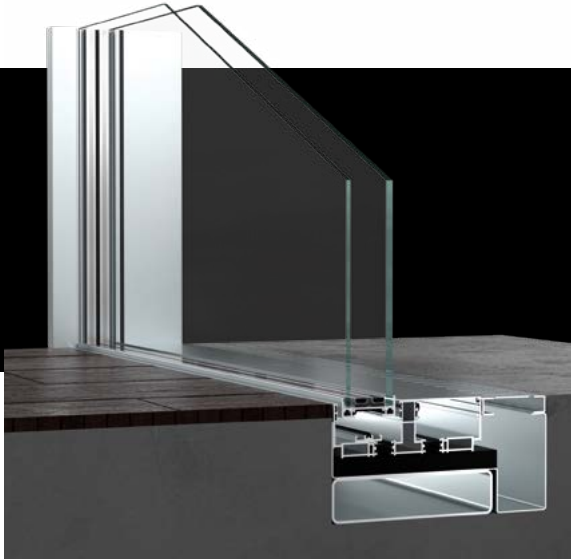


ESSENCE ALU

VS VIEW sliding system

THERMALLY INSULATED PROFILES



Innovative sliding window and door frame concept, where aluminum and glass blend in harmony. All glass views play a prominent role in the landscape, minimizing the perception of the internal-external relationship, dematerializing transparent closures to make architecture look more spectacular and modern.

SLIDING WINDOWS AND DOORS

- > Thermally insulated system.
- > Extra-clear glass and large glass panels with high performance levels.
- > Possibility to create glass angles without fixed mullions.
- > Motors, visible or hidden, activated by pushing a button or by a remote control.
- > Optional linear flush-to-the-floor door.
- > Frame visible surface 0 mm.
- > Steady glazing size 37,5 mm (double glazing) or 54 mm (triple glazing) glass thickness.
- > Capacity for 500 kg door.
- > Maximum sash width 2500 mm and maximum sash height 4000 mm.
- > Standard rails: from 1 to 3.

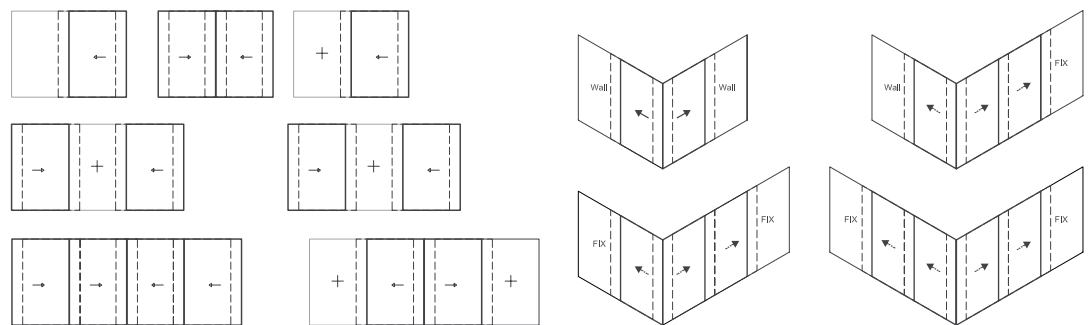
STANDARD SIZING LIMITS:

Up to L 2300 mm x H 3000 mm* (7'6 x 10')

Max 500kg/sash

*Wind pressure: 20 psf

OPENING TYPE



TESTS & REFERENCE STANDARDS

Note: all measurements are made using the SI, the values shown can be approximated due to the conversion



AIR PERMEABILITY
CLASS LC PG 80



WATERPROOFING
CLASS LC PG 80

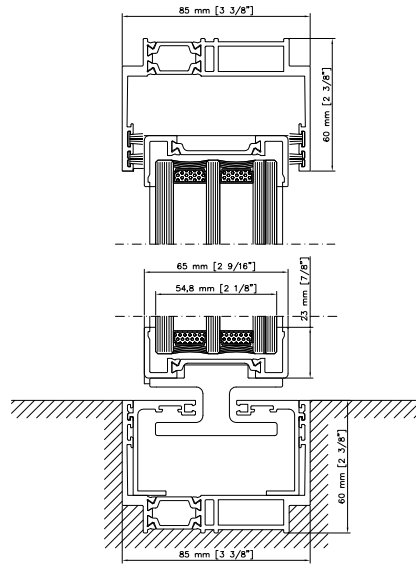
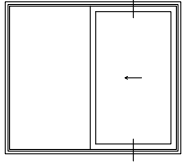


NOISE PERFORMANCE
42 DB



THERMAL TRANSMITTANCE
TRIPLE GLAZING:
U=0.267 [BTU/HR FT² °F]

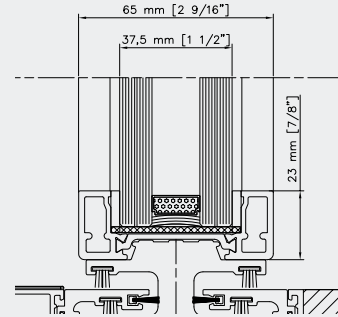
**1 RAIL
VERTICAL
SECTION**



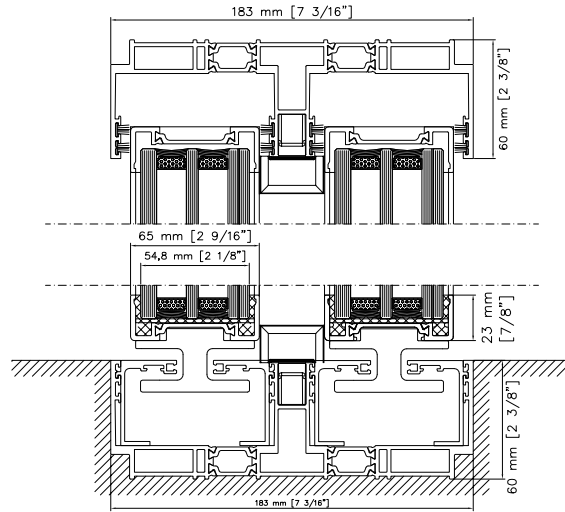
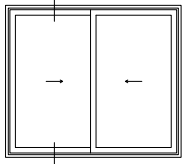
HIDDEN RAIL

ALL OPTIONS

**AVAILABLE
WITH DOUBLE
GLAZING**

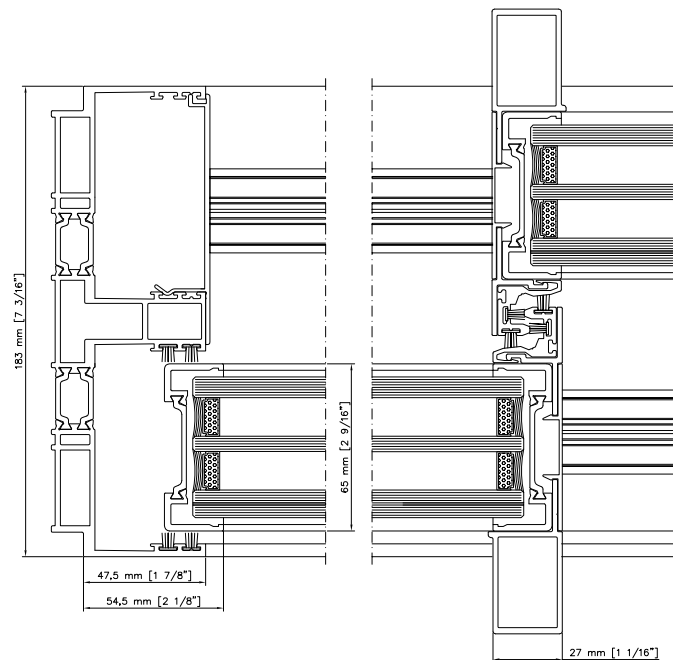
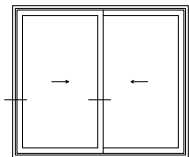


**2 RAILS
VERTICAL
SECTION**



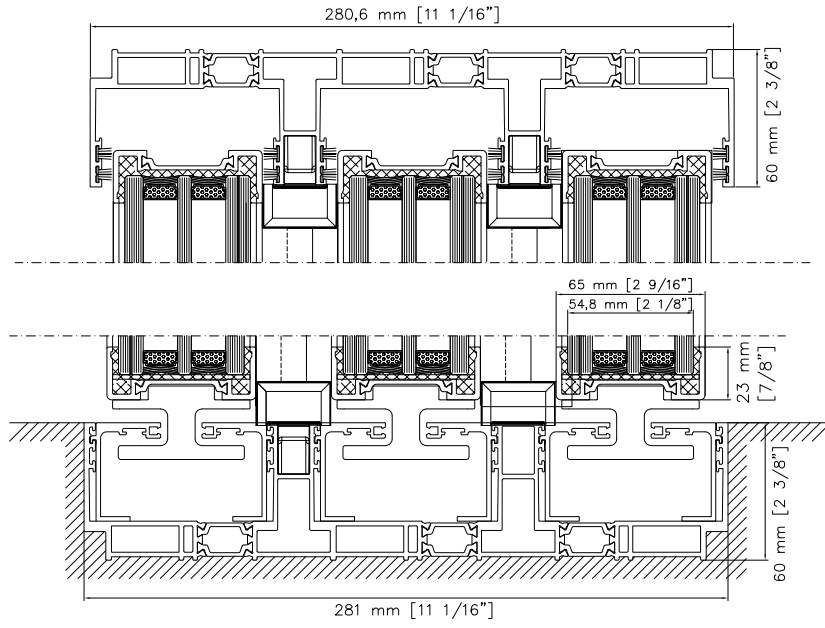
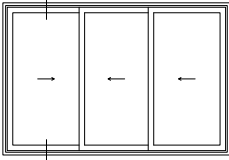
HIDDEN RAIL

**2 RAILS
HORIZONTAL
SECTION**



Thermally Insulated Profiles - ESSENCE ALU - VS VIEW

**3 RAILS
VERTICAL
SECTION**



HIDDEN RAIL

**CORNER
SECTION**

