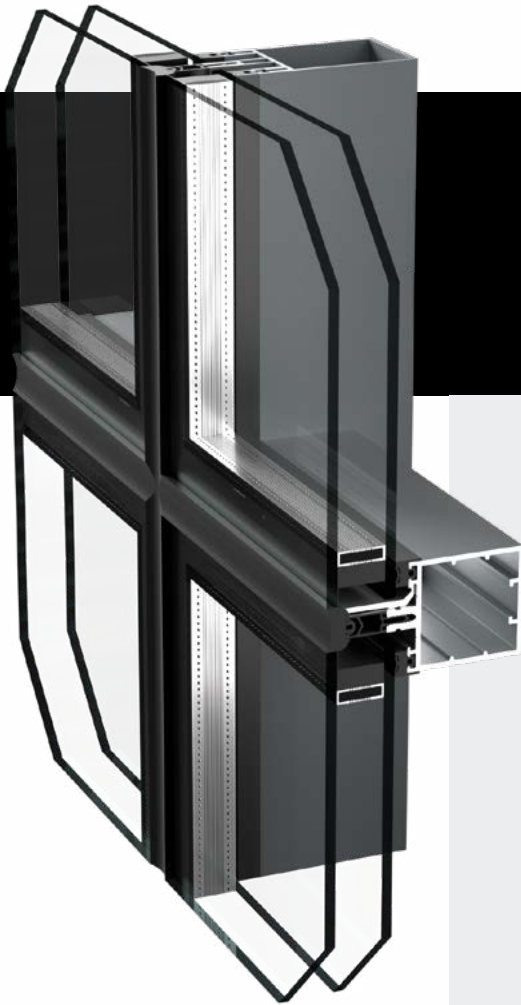


ESSENCE ALU VS50FG

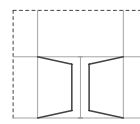
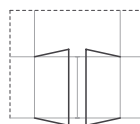
CURTAIN WALL



Expressive freedom and clean line for a contemporary style. Providing a mechanical fixing system and combining functionality with unique results.

- > All-glass structural facade.
- > Possibility of positioning at $\pm 5^\circ$ angles to the facade.
- > Continuous external waterproof sealing for closure.
- > New standard triple glass installation.
- > Glazing options from 28 mm up to 56 mm glass thickness.

OPENING TYPE



TESTS & REFERENCE STANDARDS

Note: all measurements are made using the SI, the values shown can be approximated due to the conversion



AIR PERMEABILITY
TESTED AT 12.5 PSF
0.165 CFM/FT²



WATERPROOFING
TESTED AT 25.06 PSF



WIND RESISTANCE
TESTED AT DP 41.77 PSF

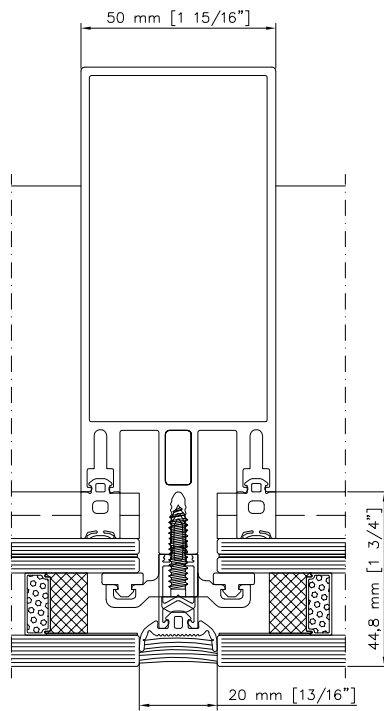
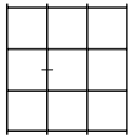


NOISE PERFORMANCE
40 DB

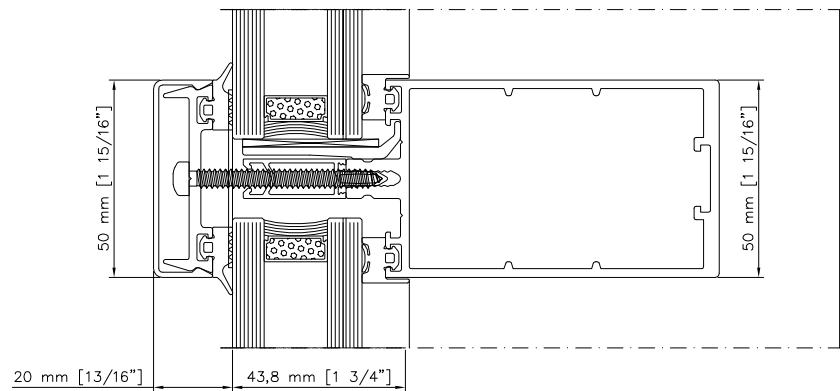
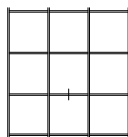


THERMAL TRANSMITTANCE
Double Glazing: $U=0.380$ [BTU/HR FT² °F]
Triple Glazing: $U=0.267$ [BTU/HR FT² °F]

HORIZONTAL SECTION



VERTICAL SECTION



HINGED WINDOW OPEN OUT

